

KOBELCO BM900HD

**Any lift, anywhere, any time**

## COMPREHENSIVE LIFTING SOLUTIONS

We look forward to providing a full heavy lift engineering and crane solution for your next project. Our heavy lift engineers and on site personnel are experienced in managing and organising highly demanding lift requirements.

Contact us to discuss your lifting requirements and a free quote.

<b>BRISBANE (HQ)</b> 07 3907 5800 37 Paringa Rd, Murarrie, QLD, 4172	<b>TOWNSVILLE</b> 07 4779 4088 3-9 Horwood St, Currajong, QLD, 4812
<b>SUNSHINE COAST</b> 0409 595 618 562 Maroochydore Rd, Kunda Park, QLD, 4556	<b>BALLINA</b> 02 6686 7748 5 Convair Ave, Ballina, NSW, 2478
<b>ROCKHAMPTON</b> 07 4939 1095 39-42 Johnson St, Park Hurst, QLD, 4702	<b>GLADSTONE</b> 07 4829 5219 7 Morgan St, Gladstone, QLD, 4680
<b>MELBOURNE</b> 03 9585 6114 PO Box 636, Wynnum, QLD, 4178	<b>MINICRANES</b> 07 5457 3727 PO Box 1659, Buderim, QLD, 4556



# MAIN BOOM LIFTING CAPACITY

**BM900HD**

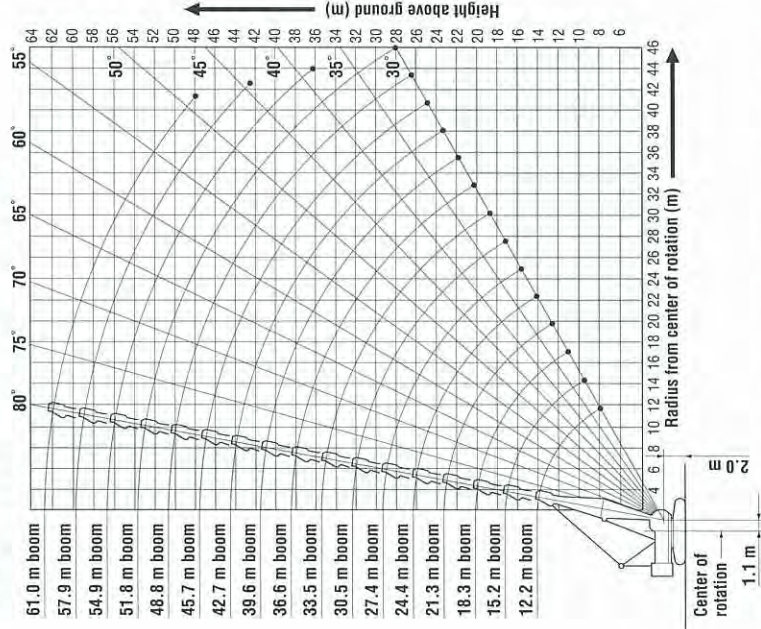
Rated loads in metric tons for 360° working area (Counterweight: 30.0 t)

Crawlers fully extended

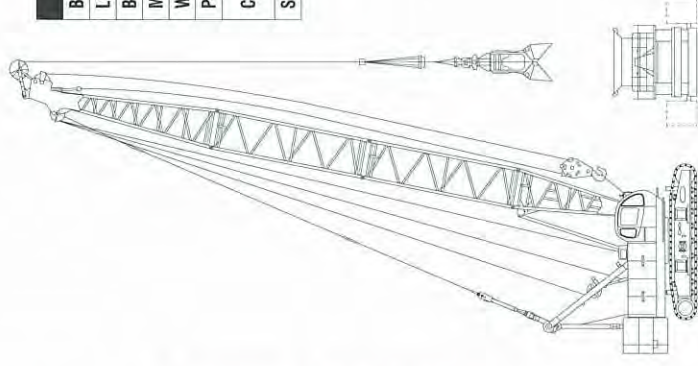
Boom length m (ft)	12.2 (40)	15.2 (50)	18.3 (60)	21.3 (70)	24.4 (80)	27.4 (90)	30.5 (100)	33.5 (110)	36.6 (120)	39.6 (130)	42.7 (140)	45.7 (150)	48.8 (160)	51.8 (170)	54.9 (180)	57.9 (190)	61.0 (200)
3.7	90.0																
4.0	84.0	81.0/4.2	73.5/4.7														
5.0	70.2	70.0	69.8	66.4/5.2	57.9/5.8												
6.0	55.1	55.0	54.9	54.8	54.7	51.0/6.3	44.9/6.8										
7.0	43.5	43.4	43.3	43.2	43.1	43.0	42.9	40.0/7.4	36.0/7.9								
8.0	35.9	35.7	35.6	35.5	35.4	35.3	35.2	35.1	35.0	32.6/8.4	29.7/8.9						
9.0	30.4	30.3	30.1	30.0	29.9	29.8	29.7	29.6	29.5	29.4	29.3	27.2/9.5					
10.0	26.4	26.2	26.1	26.0	25.8	25.7	25.7	25.5	25.4	25.3	25.2	25.0	25.0	22.9/10.5	20.8/11.1	19.0/11.6	
12.0	19.2/11.8	20.6	20.4	20.3	20.2	20.0	20.0	19.8	19.7	19.6	19.5	19.3	19.3	19.2	19.0	18.9	17.2/12.1
14.0		16.9	16.7	16.5	16.4	16.2	16.2	16.0	16.0	15.8	15.7	15.5	15.5	15.3	15.2	15.1	14.9
16.0		15.7/14.5	14.0	13.9	13.7	13.6	13.5	13.3	13.3	13.1	13.0	12.8	12.8	12.6	12.5	12.4	12.2
18.0			12.9/17.1	11.9	11.7	11.6	11.5	11.3	11.2	11.1	10.9	10.8	10.8	10.6	10.5	10.3	10.2
20.0				10.5/19.7	10.2	10.0	10.0	9.8	9.7	9.6	9.4	9.2	9.2	9.0	8.9	8.8	8.6
22.0					8.9	8.8	8.7	8.5	8.4	8.3	8.1	8.0	8.0	7.8	7.6	7.5	7.3
24.0					8.8/22.4	7.8	7.7	7.5	7.4	7.3	7.1	7.0	6.9	6.8	6.6	6.5	6.3
26.0						7.4/25.0	6.9	6.7	6.6	6.5	6.3	6.1	6.1	5.9	5.8	5.6	5.5
28.0							6.3/27.7	6.0	5.9	5.7	5.6	5.4	5.4	5.2	5.0	4.9	4.7
30.0								5.4	5.3	5.1	4.9	4.8	4.8	4.6	4.4	4.3	4.1
32.0								5.3/30.3	4.8	4.6	4.4	4.3	4.2	4.0	3.9	3.8	3.6
34.0									4.5/32.9	4.2	4.0	3.8	3.8	3.6	3.4	3.3	3.0
36.0										3.9/35.6	3.6	3.4	3.4	3.2	3.0	2.8	2.5
38.0											3.2	3.1	3.0	2.8	2.6	2.4	2.1
40.0											3.2/38.2	2.7	2.6	2.4	2.2	2.0	1.7
42.0												2.6/40.8	2.3	2.0	1.8	1.6	1.5/41.3
44.0													2.1/43.5	1.7	1.5	1.5/42.6	
46.0																	1.5

Note: Rating do not exceed 75 % of tipping load. Deduct the weight of main hook, and other load handling accessories from the ratings shown.  
 Rating inside shown in      are determined by the strength of the boom or other structural components.  
 When actually operating the machine, strictly observe the instruction of the operator's manual.

## WORKING RADIUS



## HAMMER GRAB



Recommended Specification	
Boom Length	21.3 m
Lifting Capacity at 7m	43.2 t
Bucket Rated Load	125 kN
Max. Line Pull (Approx.)	250 kN
Wire Rope Dia.	28 mm
Power Plant	220 kW
Capacity of Wire Rope by Drum Layer	1st 39 m 2nd 82 m
Suitable Layer	1st to 2nd

Note: Due to our policy of continual product improvements all designs and specifications are subject to change without advance notice.

### KOBELCO CRANES CO., LTD.

17-1, HigashiGotanda 2-chome, Shinagawa-ku, TOKYO, 141-8626 JAPAN  
 Tel: ++81 (0) 3-5789-2130 Fax: ++81 (0) 3-5789-3372

Bulletin No. BM900HD-S02

031101TF Printed in Japan